

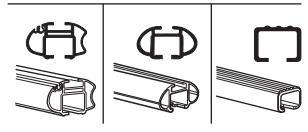
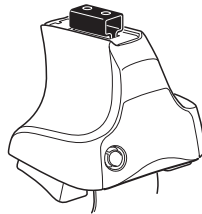
Kit 1068

HONDA Civic, 4-dr Sedan, 96-00

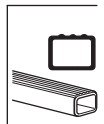
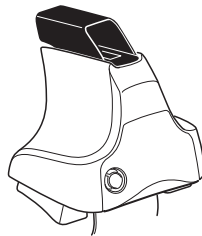
HONDA Civic Ferio, 4-dr Sedan, 96-99

ACURA EI, 4-dr Sedan, 96-05

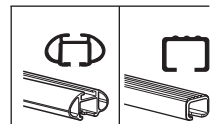
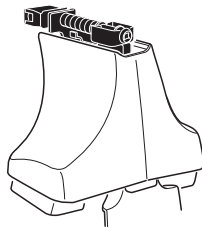
480R
754



480



750



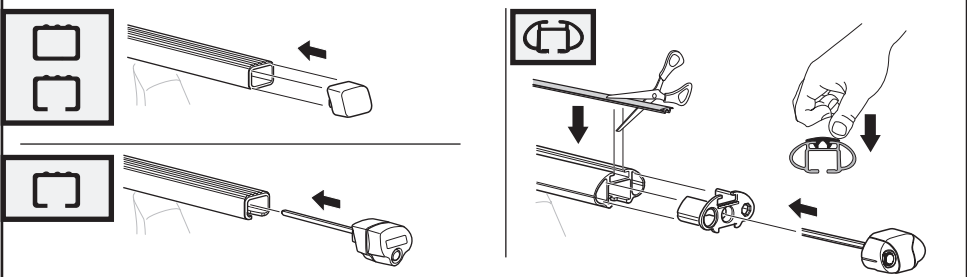
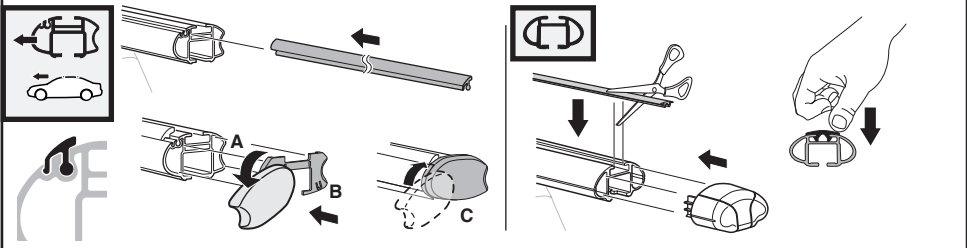
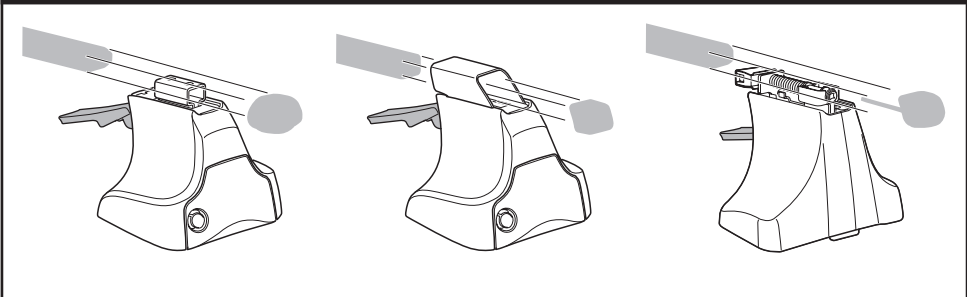
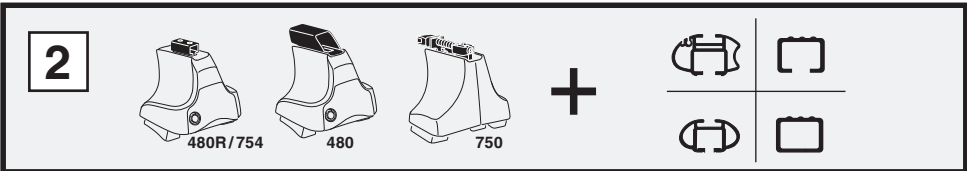
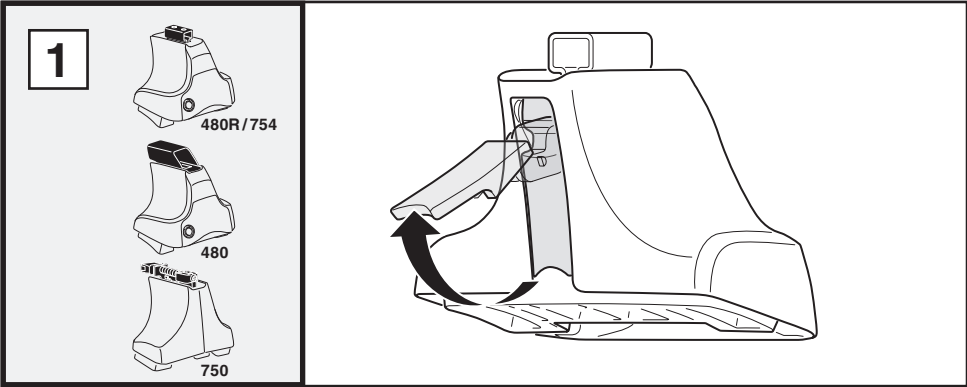
x2 x2 x2 x4	x2	x2 x2 x4 x4	x2 x2	x2

185 x 4

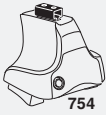
15 x 4

x 1

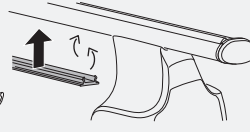
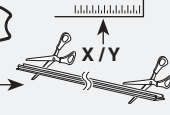
Kit



3



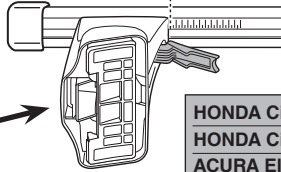
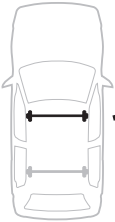
754



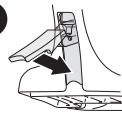
750



1

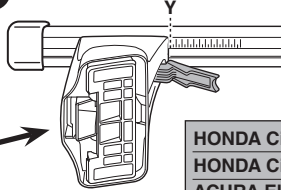


2

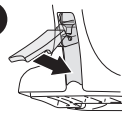


	X
HONDA Civic, 4-dr Sedan, 96-00	24,5
HONDA Civic Ferio, 4-dr Sedan, 96-99	24,5
ACURA EI, 4-dr Sedan, 96-05	24,5

1



2



	Y
HONDA Civic, 4-dr Sedan, 96-00	24,5
HONDA Civic Ferio, 4-dr Sedan, 96-99	24,5
ACURA EI, 4-dr Sedan, 96-05	24,5

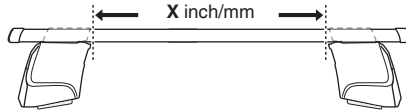


480R

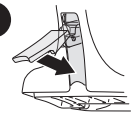


480

1

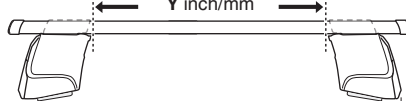


2

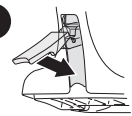


	X inch	X mm
HONDA Civic, 4-dr Sedan, 96-00	35 1/4"	896 mm
HONDA Civic Ferio, 4-dr Sedan, 96-99	35 1/4"	896 mm
ACURA EI, 4-dr Sedan, 96-05	35 1/4"	896 mm

1



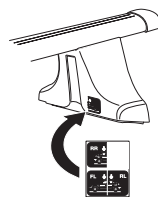
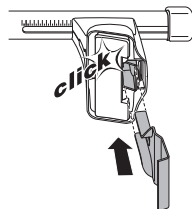
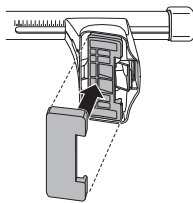
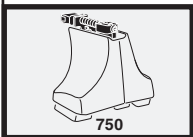
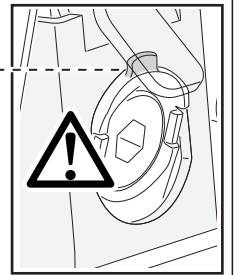
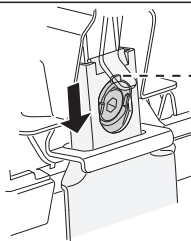
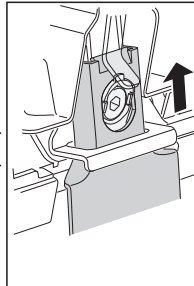
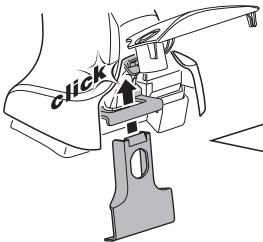
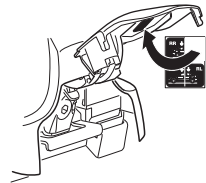
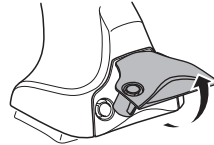
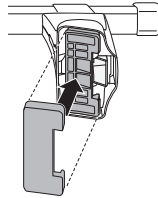
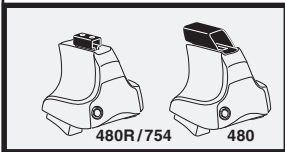
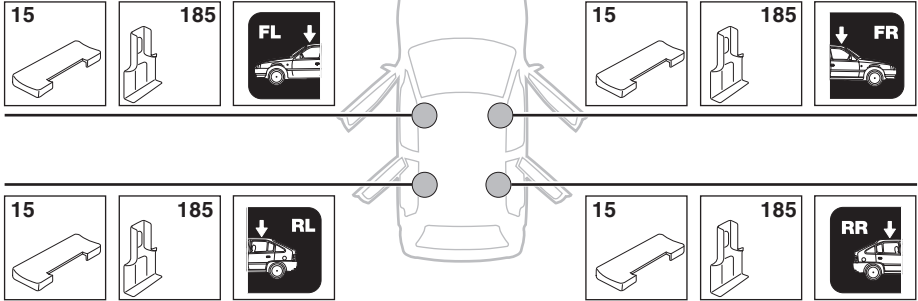
2



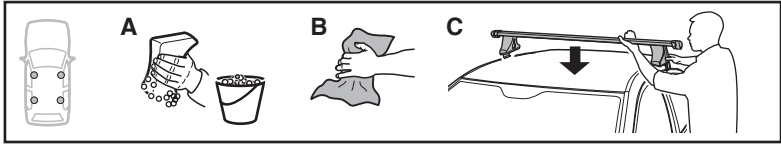
	Y inch	Y mm
HONDA Civic, 4-dr Sedan, 96-00	35 1/4"	896 mm
HONDA Civic Ferio, 4-dr Sedan, 96-99	35 1/4"	896 mm
ACURA EI, 4-dr Sedan, 96-05	35 1/4"	896 mm

4

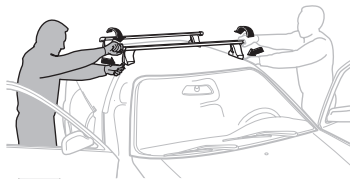
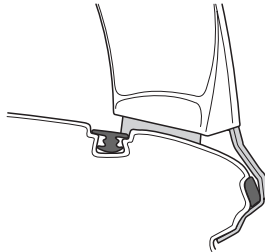
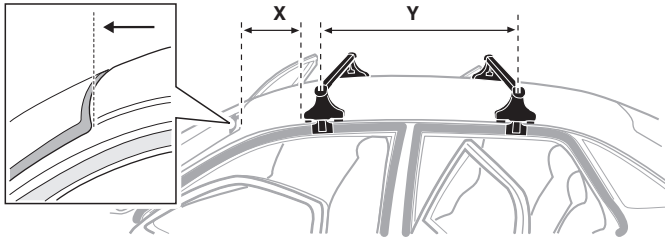
HONDA Civic, 4-dr Sedan, 96-00
HONDA Civic Ferio, 4-dr Sedan, 96-99
ACURA EI, 4-dr Sedan, 96-05



5



	X mm	Y mm	X inch	Y inch
HONDA Civic, 4-dr Sedan, 96-00	220 mm	700 mm	8 5/8"	27 1/2"
HONDA Civic Ferio, 4-dr Sedan, 96-99	220 mm	700 mm	8 5/8"	27 1/2"
ACURA EI, 4-dr Sedan, 96-05	220 mm	700 mm	8 5/8"	27 1/2"



GB/US Tighten alternately

D Die Schrauben abwechselnd anziehen

F Serrer alternativement chaque côté

NL Afwisselend aan de linker- en de rechterkant aandraaien

I Alternare il serraggio delle viti

E Serrare alternativamente

PT Aperte alternadamente

S Dra åt växelvis

FIN Kierrä vuorotellen

EST Pinguldage vaheldumisi

LAT Pievelciēt pamīšus

LIT Užsukinėkite pakaitomis

PL Śruby dokręcaj naprzemiennie

RU Затягивайте попеременно

CZ Pokręťta bagažníka dokręcaj dokręcaj naprzemiennie.

SK Doťahujte striedavo

SLO Privijajte izmenično.

HR Naizmjenično zategnite

HU Egymástól függetlenül szorítandó

GR Σφίγγετε εναλλάξ

TR Dönüşümlü sıkın

中文 交替拧紧

한국어 번갈아 가며 조이십시오.

日本語 交互に締め付けてください。

ไทย ชั้โน้แบบสลับ

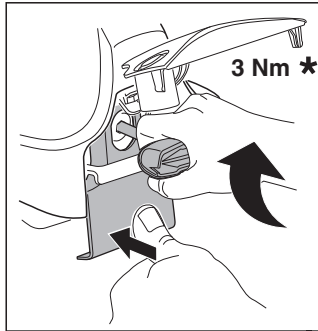
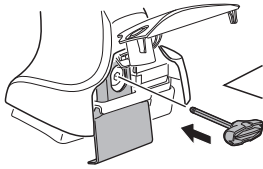
6



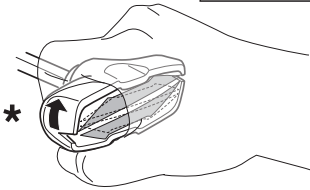
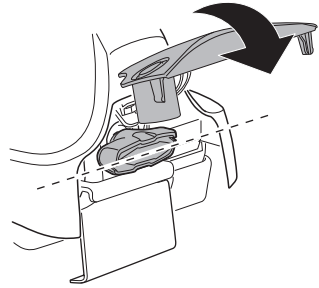
480R/754



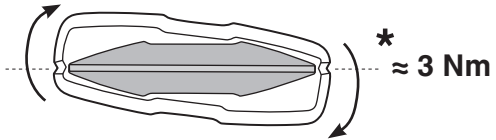
480



3 Nm *



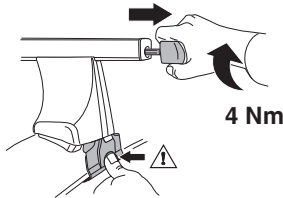
*



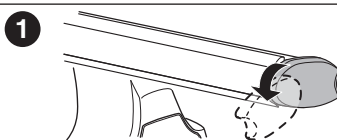
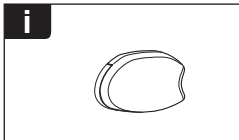
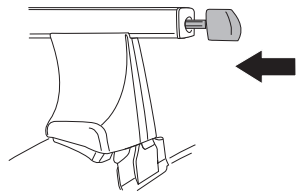
* ≈ 3 Nm



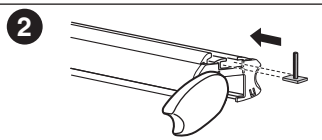
750



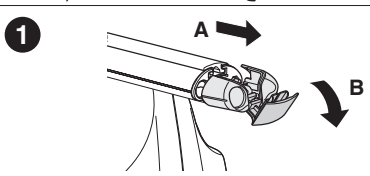
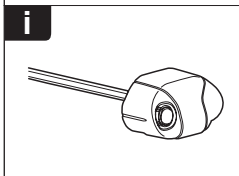
4 Nm



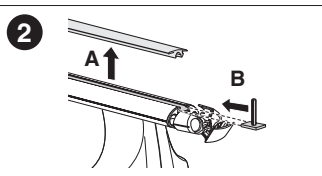
1



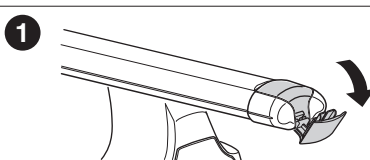
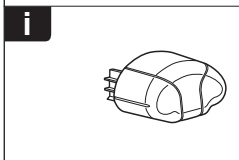
2



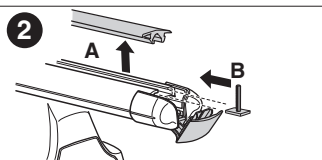
1



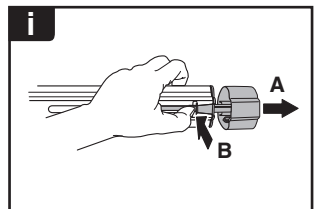
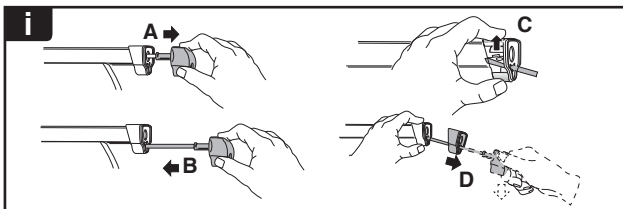
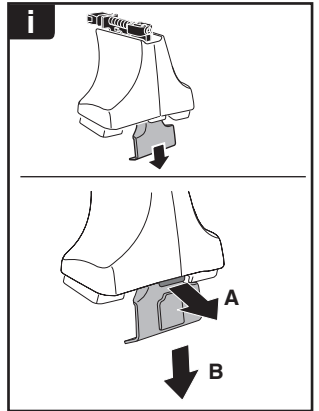
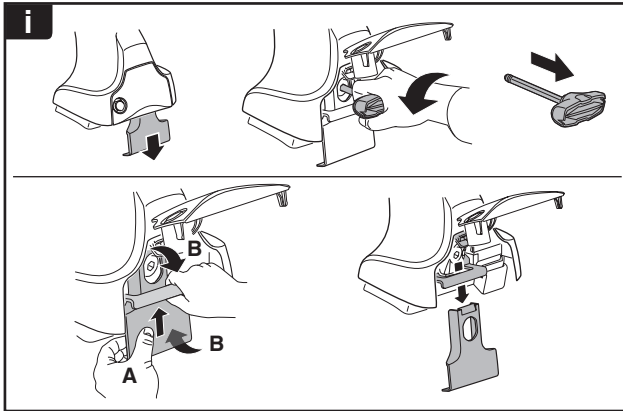
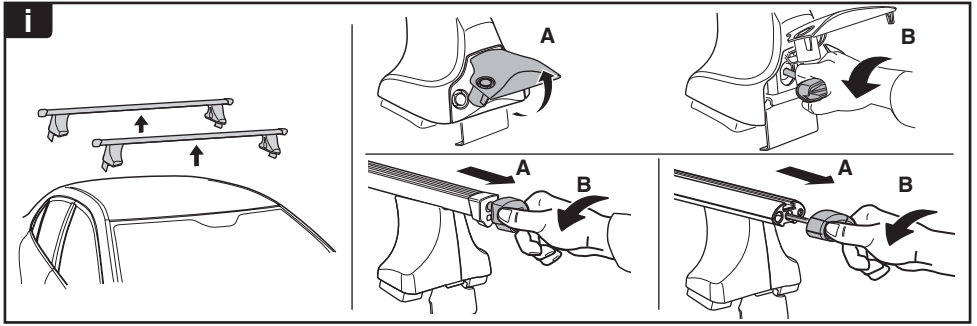
2



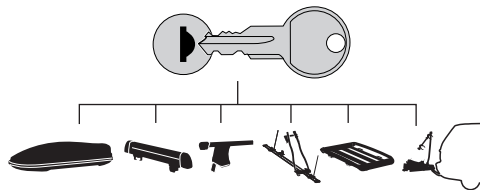
1



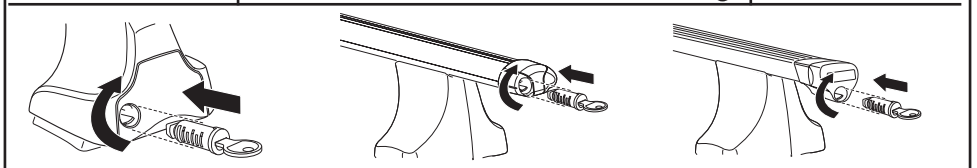
2



THULE
SWEDEN
**ONE
KEY
SYSTEM**



- 544 (x4)
- 596 (x6)
- 588 (x8)
- NA 510 (x10)
- EUR 452 (x12)
- ASIA



WW ▶ Thule Sweden AB, Box 69, 330 33 Hillerstorp, SWEDEN
NA ▶ Thule Inc., 42 Silvermine Road, Seymour, Connecticut 06483, USA

info@thule.com
customer.service@thule.com

www.thule.com